



**GLNP**  
GREATER LINCOLNSHIRE  
NATURE PARTNERSHIP

# Introduction to the Greater Lincolnshire Nature Partnership

Charlotte Phillips – Nature Partnership Manager  
Luke Bamforth – Policy Officer

## What do we do?

---

- Local Wildlife Sites and Local Geodiversity Sites system
- Ancient Woodland Inventory
- Operation Water Vole
- Local Nature Recovery Strategy
- Policy work
- Local Environmental Records Centre
- Mapping



## Who are we?

---

- Partnership of 49 + organisations
- Hosted by Lincolnshire Wildlife Trust
- Long history
- Environmental Records Centre



## Local Sites System

### Local Sites reporting – Indicator 160-00

End of financial year figures for 2021-22



Single Data List Indicator 160-00  
*“Proportion of Local Sites where positive conservation management is being achieved”* is a proxy measure of local biodiversity and is used by central government to assess the performance of local authorities.

	LWSs	LGSs	Local Sites	Sites in positive management	
				Number	Proportion
Boston	26	1	27	23	85%
City of Lincoln	45	2	47	32	68%
East Lindsey	416	21	437	199	46%
North Kesteven	150	8	158	61	39%
South Holland	56	0	56	41	73%
South Kesteven	229	12	241	102	42%
West Lindsey	192	8	200	83	42%
Central Lincs JPU <sup>1</sup>	384	17	401	175	44%
Lincolnshire County	1093	51	1144	529	46%
North East Lincolnshire	32	8	40	9	22%
North Lincolnshire	198	36	234	160	68%
<b>Greater Lincolnshire</b>	<b>1315</b>	<b>95</b>	<b>1410</b>	<b>690</b>	<b>49%</b>

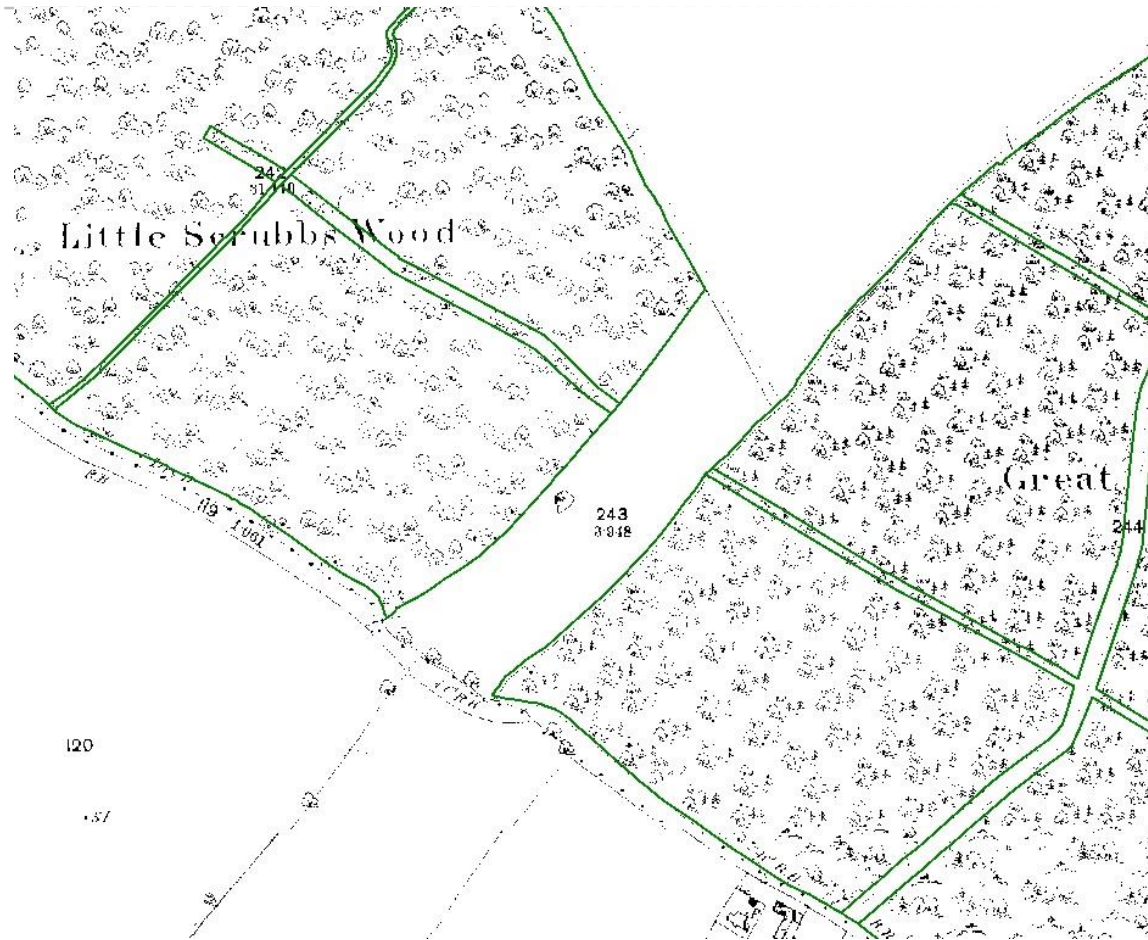


## Operation Water Vole

---

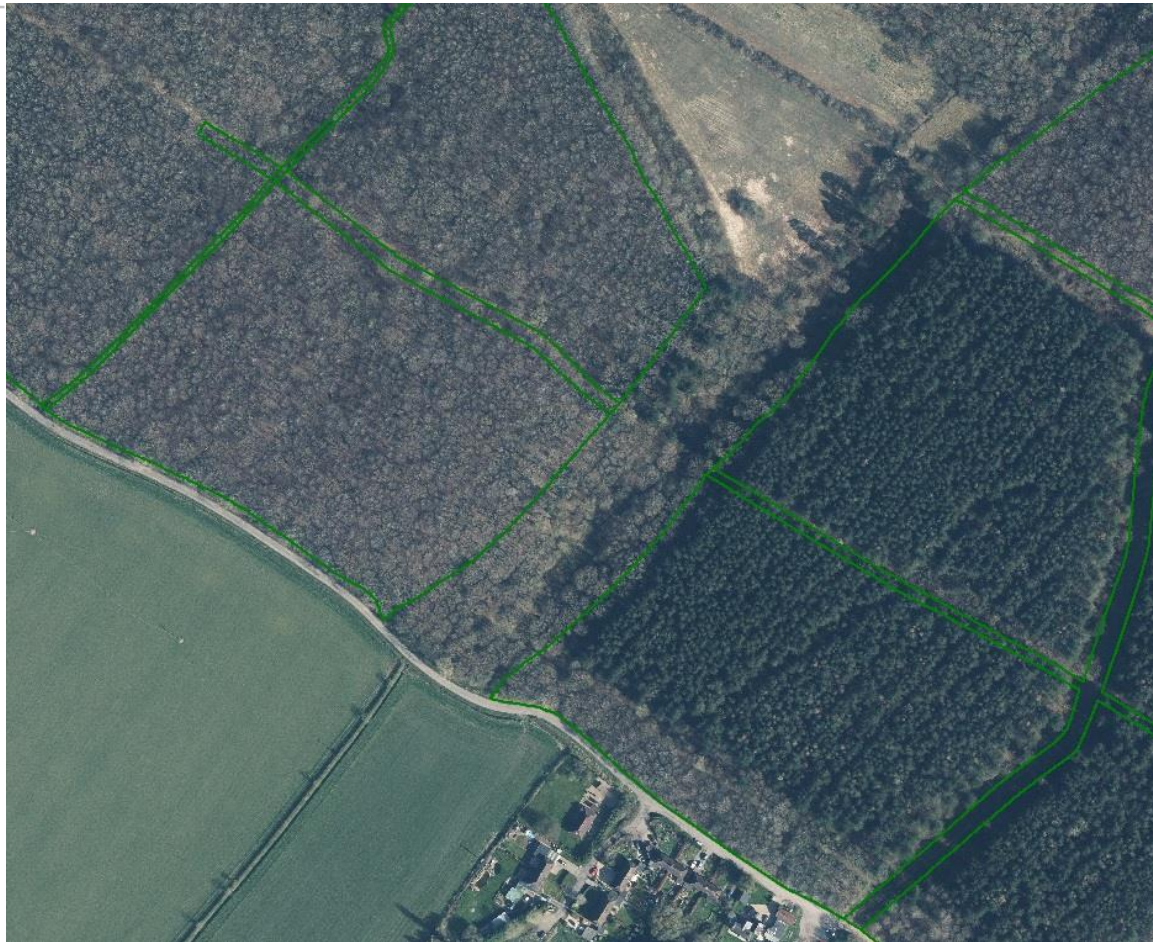


## Ancient Woodland Inventory



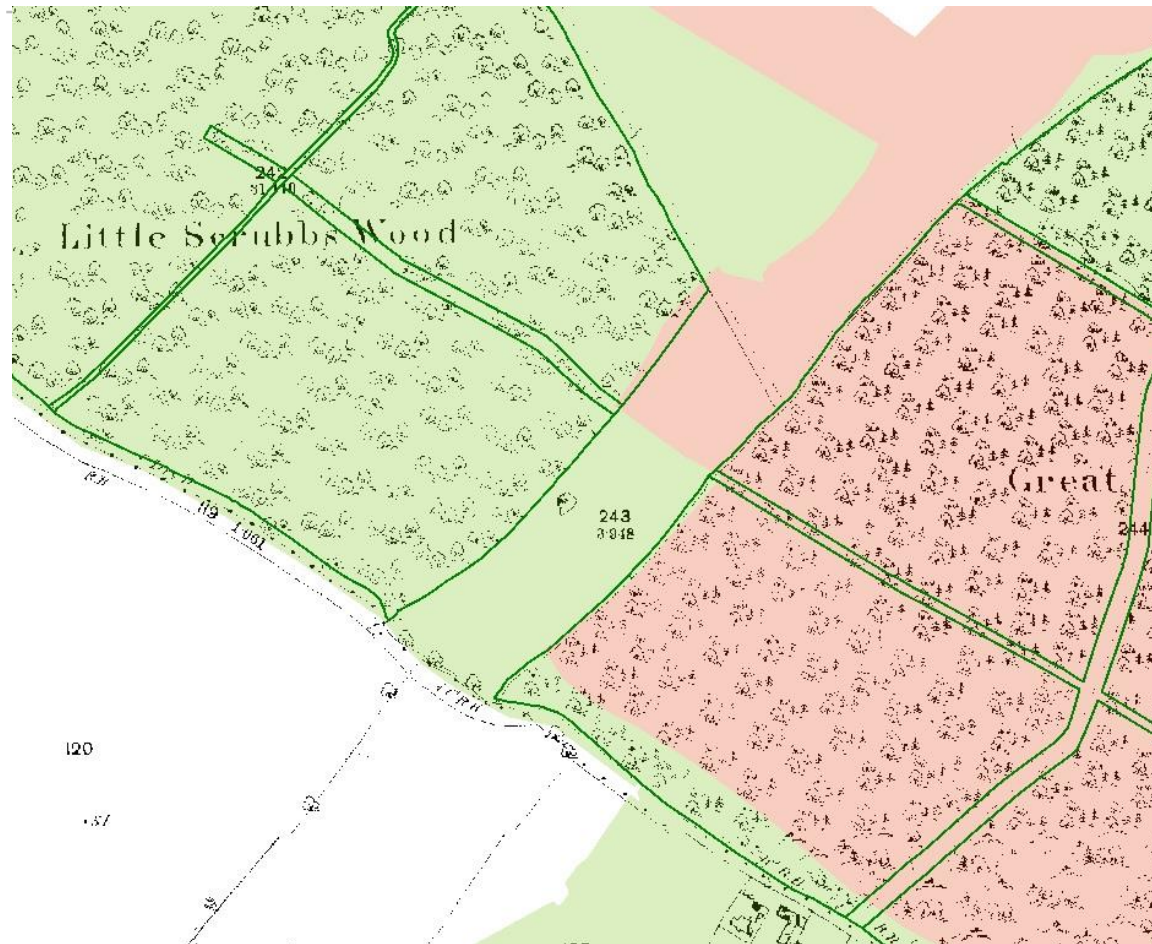
## Ancient Woodland Inventory

---





## Ancient Woodland Inventory





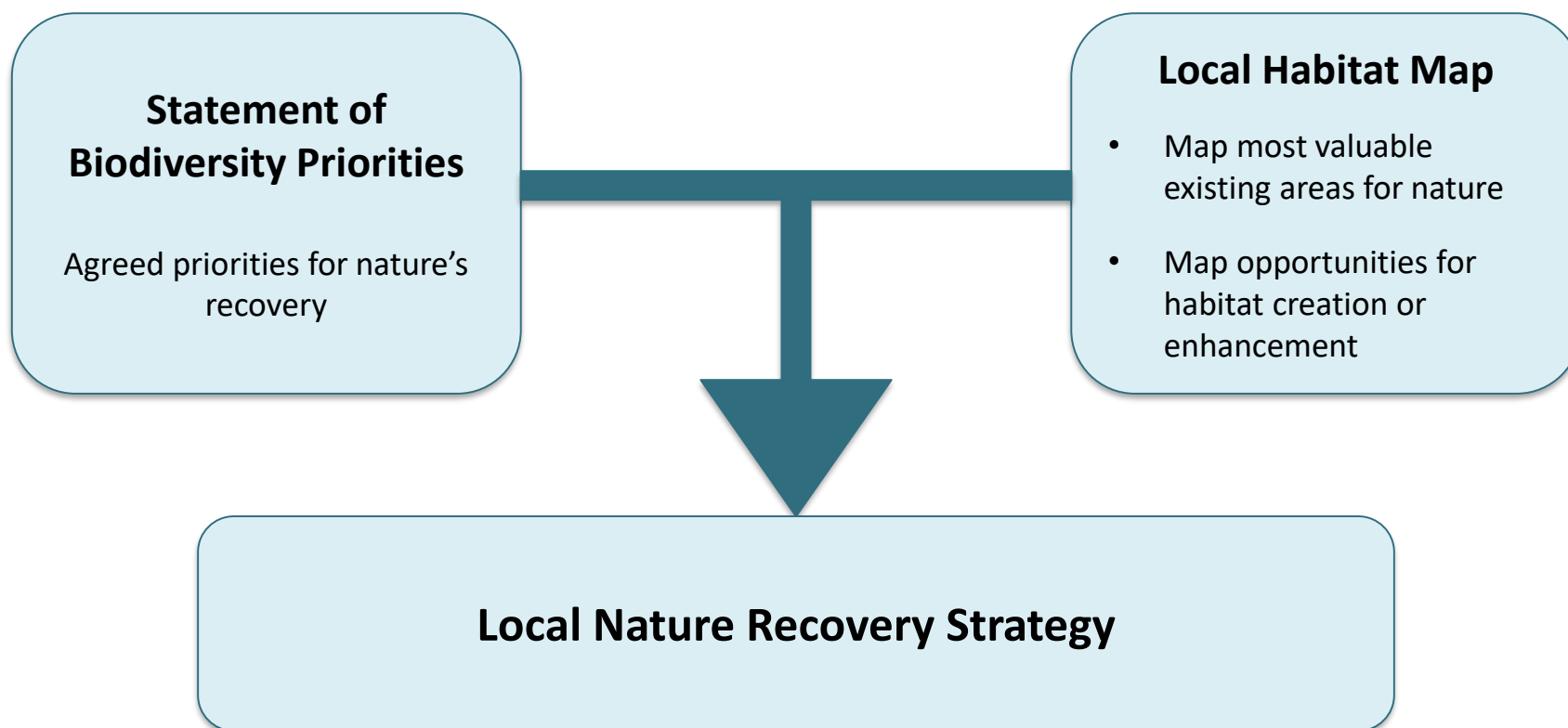
## Local Nature recovery Strategy

---



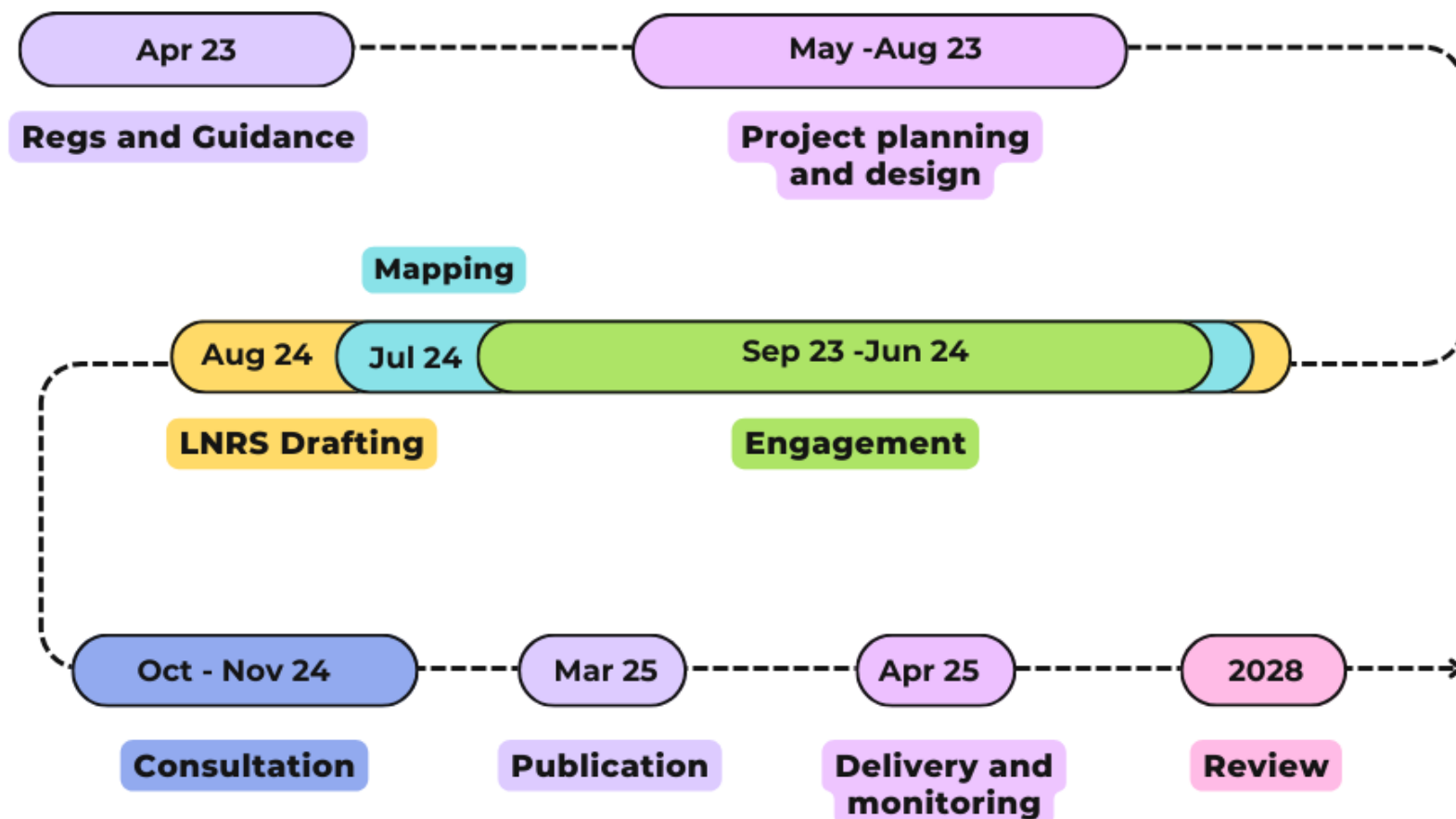
## LNRS Production

---

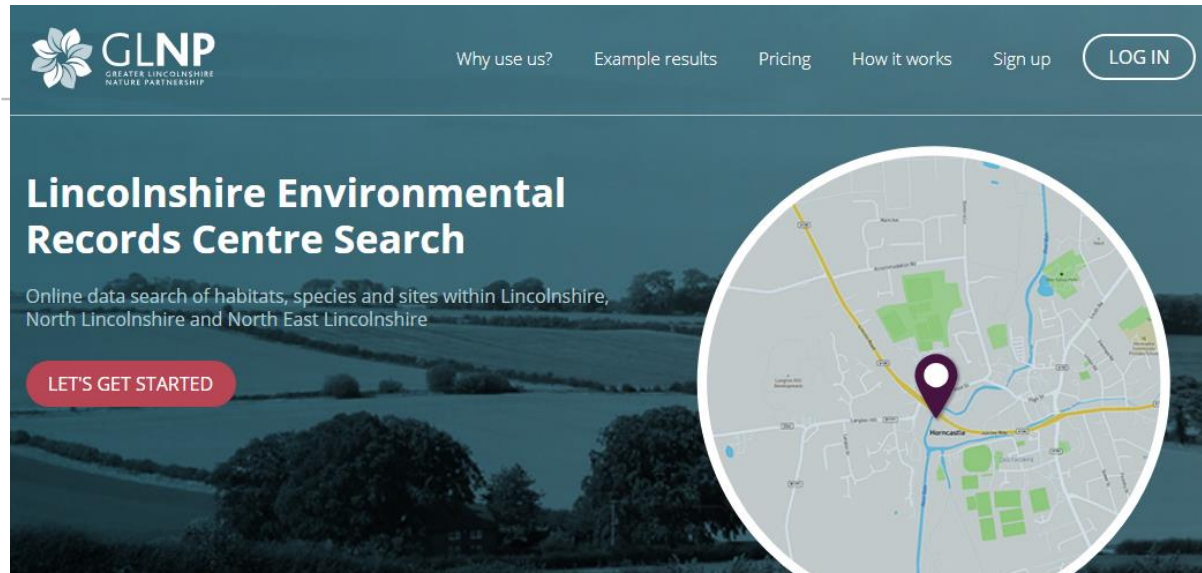




## LNRS Timeline







The screenshot shows the LERC Search website. At the top is the GLNP logo and navigation links: 'Why use us?', 'Example results', 'Pricing', 'How it works', 'Sign up', and a 'LOG IN' button. The main heading is 'Lincolnshire Environmental Records Centre Search'. Below it is the subtitle 'Online data search of habitats, species and sites within Lincolnshire, North Lincolnshire and North East Lincolnshire'. A red button labeled 'LET'S GET STARTED' is on the left. On the right is a circular map of Lincolnshire with a purple location pin over the Lincoln area.

Why should you use **LERC Search** for your environmental searches in Lincolnshire?



**24/7 Access** with instant results



Over **5 million species records**



**All statutory and non-statutory sites**



**One fixed price** for searches



**Filterable Excel spreadsheet** of results



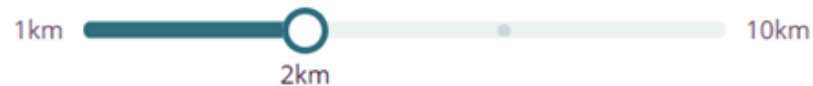
Data from Lincolnshire, North and North East Lincolnshire **including all local groups**



## Begin your search...

Enter a grid reference...

Select your radius...



SEARCH NOW

Need a custom search? We can still help, just **email us** the details.



# Results!

## Habitats

Priority habitats are those identified as being the most threatened and requiring conservation action in the UK. The most recent list of UK priority species and habitats was published in August 2007 following a 2-year review of the process and priorities, representing the most comprehensive analysis of such information ever undertaken in the UK.

The data presented is the most up-to-date of the data collated by the GLNP and mostly comes from surveys of Local Sites; further historic data and non-Priority habitat data may also be available. Absence of information doesn't mean that the Priority habitat isn't present merely that no information is held.

Code	Type	Habitat	Survey Date	Area (ha)
1	Priority Habitat	Eutrophic standing waters	2006	7.5
2	Priority Habitat	Eutrophic standing waters	2014	0.04
3	Priority Habitat	Eutrophic standing waters	2014	0.07
4	Priority Habitat	Eutrophic standing waters	2014	0.19
5	Priority Habitat	Lowland dry acid grassland	2006	0.55
6	Priority Habitat	Lowland dry acid grassland	2006	3.08
7	Priority Habitat	Lowland dry acid grassland	2006	61.9
8	Priority Habitat	Lowland fens	2006	1.46
9	Priority Habitat	Lowland fens	2006	3.05
10	Priority Habitat	Lowland meadows	2006	0.01
11	Priority Habitat	Lowland meadows	2006	0.01
12	Priority Habitat	Lowland meadows	2006	0.03
13	Priority Habitat	Lowland meadows	2006	0.06
14	Priority Habitat	Lowland meadows	2006	0.07
15	Priority Habitat	Lowland meadows	2006	0.17
16	Priority Habitat	Lowland meadows	2006	0.29
17	Priority Habitat	Lowland meadows	2006	0.3
18	Priority Habitat	Lowland meadows	2006	0.75
19	Priority Habitat	Lowland meadows	2006	1.79
20	Priority Habitat	Lowland meadows	2006	1.81
21	Priority Habitat	Lowland meadows	2006	1.84
22	Priority Habitat	Lowland meadows	2006	1.84
23	Priority Habitat	Lowland meadows	2006	2.36
24	Priority Habitat	Lowland meadows	2008	1.74
25	Priority Habitat	Lowland mixed deciduous woodland	2006	0.06
26	Priority Habitat	Lowland mixed deciduous woodland	2006	0.08
27	Priority Habitat	Lowland mixed deciduous woodland	2006	0.57
28	Priority Habitat	Lowland mixed deciduous woodland	2006	1.47
29	Priority Habitat	Lowland mixed deciduous woodland	2006	2.22
30	Priority Habitat	Lowland mixed deciduous woodland	2006	3.14
31	Priority Habitat	Lowland mixed deciduous woodland	2006	5.17

## Habitats within the search area



th  
R  
S  
/20  
ire  
....

mation on what is  
ge.

# Previous searches



## Previous searches

Searches are valid for **12 months**, after they expire you will no longer be able to download the results. To search after expiry click search again.

Date ▼	Grid ref ▼	Project name ▼	Invoice no.	Downloads		Search again
10 Oct 18	SK 95470 69136	Showroom sea...	GLNP1159	Report	Species	
02 Oct 18	TF 140 778	test 1	GLNP1113	Report	Species	

Start a new search

## Policy Priorities

---

- Farming with nature
- Being well with nature
- Planning with nature
- Enjoying nature







“The Lincolnshire Bird Trail is a collaborative project which aims to promote Greater Lincolnshire’s value as a birdwatching destination, connecting people with nature, enhancing the visitor offer and extending the tourist season. It includes the most appropriate sites taking into account the bird species present, the sites ability to absorb visitor footfall and the wider hospitality offer nearby.”

## Current policy work with SKDC

---

- Local plan
  - 2018 SoCG
  - Screening potential allocated sites
  - Supporting on biodiversity policy including BNG
- Biodiversity net gain
  - Preparing internal guidance for planning officers
  - Developing guidance on interpreting the statutory metric
  - Training for planning officers on interpreting the metric
- Mapping

## Biodiversity opportunity mapping

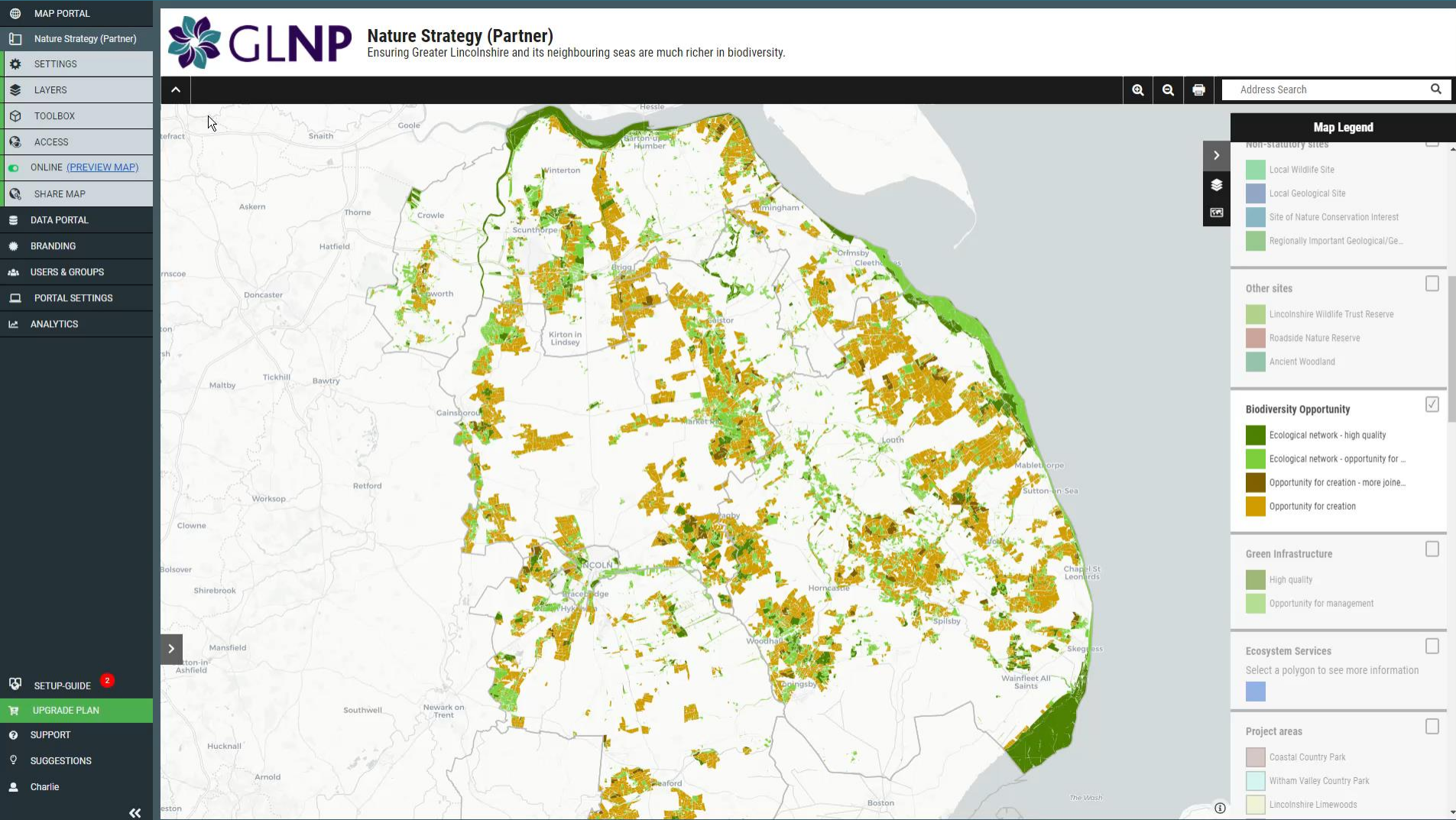
---

- Strategic approach to nature recovery
- Landscape scale
- Connecting habitats and connected areas
- Useful for many organisations
- National Planning Policy Framework
- Public facing map soon
- Next stage habitat recommendations

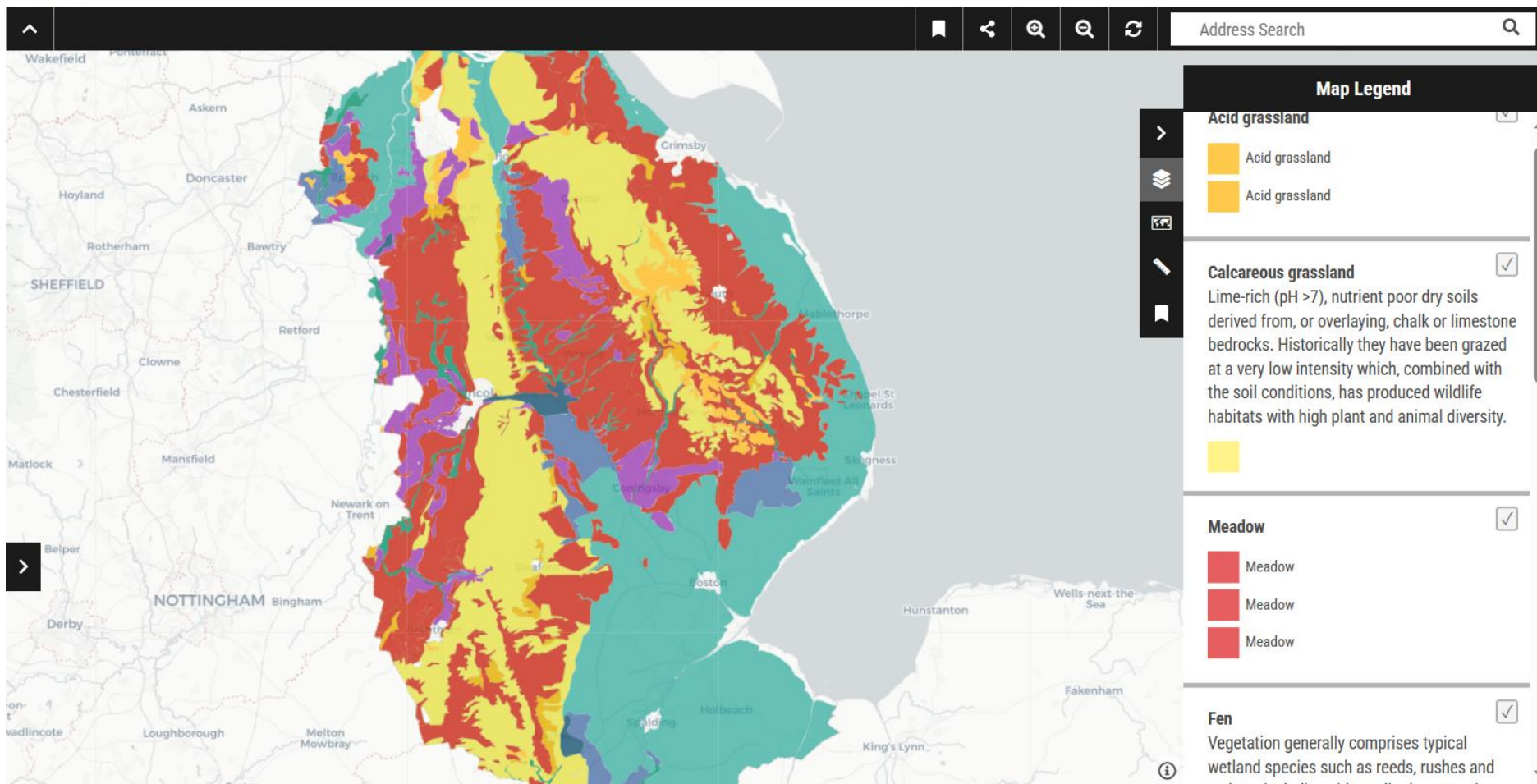




# Greater Lincolnshire Nature Partnership

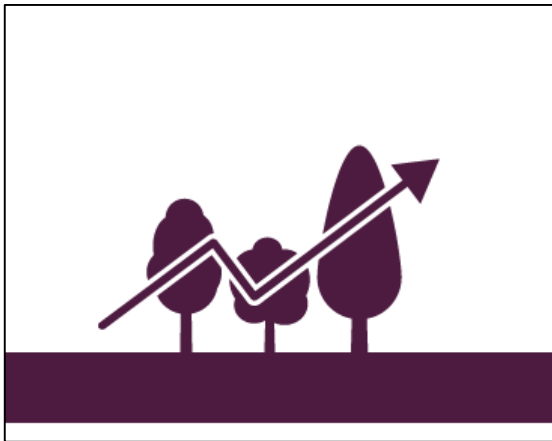


# Greater Lincolnshire Nature Partnership



## Local Natural Capital Plan

---



The Plan will use a biodiversity first principle and be completed over three phases. It will seek to build on existing data while encouraging input from all relevant stakeholders. Intended outputs will include a list of shared objectives, a natural capital evidence base and a toolkit to enable stakeholders to utilise this evidence.



# Greater Lincolnshire Nature Partnership





## What can we do to help?

---



## Any Questions?

